

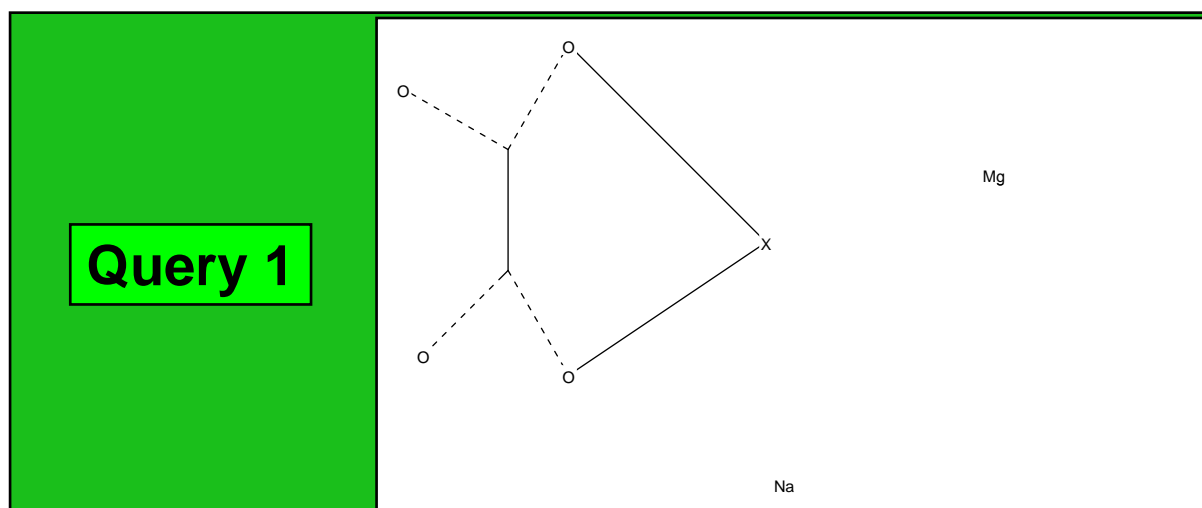
Search Overview

Search: search3
Date/Time done: Tue Aug 26 19:11:28 2008
Database(s): CSD version 5.29 (November 2007)
CSD version 5.29 updates (Jan 2008)
Restriction Info: No refcode restrictions applied
Filters: None
Percentage Completed: 100%
Number of Hits: 4

Single query used. Search found structures that:

match

Query 1



Search: search3 (Tue Aug 26 19:11:28 2008): Hits 1-4

QQQDGY

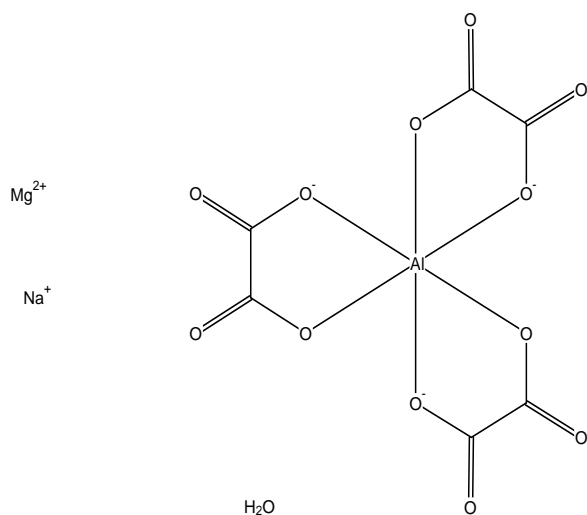
Reference: W.Schneider, L.Frossard (1968) *Schweiz.Mineral.Petrogr.Mitt.* **48**,821

Formula: $Mg_1^{2+}, Na_1^{1+}, C_6 Al_1 O_{12}^{3-}, 8(H_2 O_1)$

Compound Name: Sodium magnesium trioxalato-aluminate octahydrate

Space Group: P-3c1 **Cell:** a 16.760(4) b 16.760(4) c 12.651(3)
Space Group No.: 165 **Cell:** (Å, °) α 90.00 β 90.00 γ 120.00

R-Factor (%): 0.00 **Temperature(K):** 295 **Density(g/cm³):** 1.562



QQQDHA

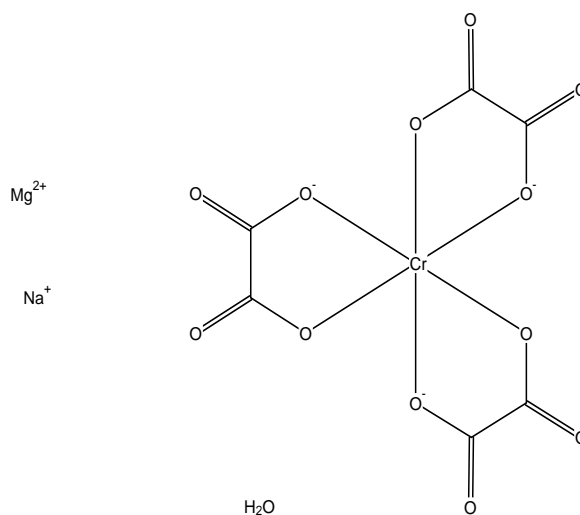
Reference: W.Schneider, L.Frossard (1968) *Schweiz.Mineral.Petrogr.Mitt.* **48**,821

Formula: $Mg_1^{2+}, Na_1^{1+}, C_6 Cr_1 O_{12}^{3-}, 8(H_2 O_1)$

Compound Name: Sodium magnesium trioxalato-chromate octahydrate

Space Group: P-3c1 **Cell:** a 16.986(9) b 16.986(9) c 12.452(7)
Space Group No.: 165 **Cell:** (Å, °) α 90.00 β 90.00 γ 120.00

R-Factor (%): 0.00 **Temperature(K):** 295 **Density(g/cm³):** 1.625



YIZWUZ

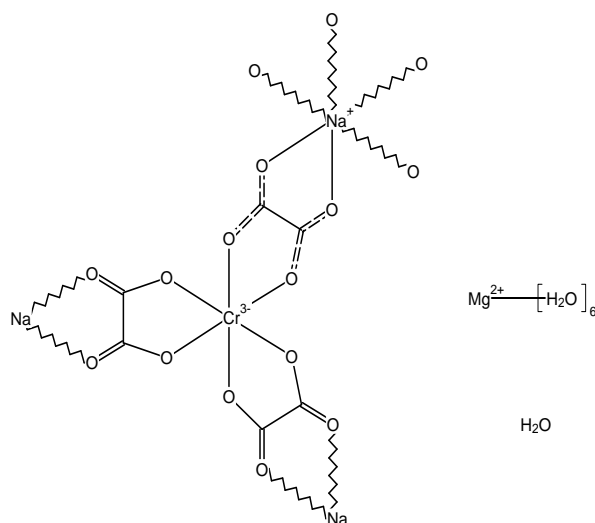
Reference: J.-S.Suh, J.-Y.Shin, C.Yoon, K.-W.Lee, I.-H.Suh, J.-H.Lee, B.-Y.Ryu, S.-S.Lim (1994) *Bull.Korean Chem.Soc.* **15**,245

Formula: $(C_6 Cr_1 Na_1 O_{12}^{2-})_n, n(H_{12} Mg_1 O_6^{2+}), 4n(H_2 O_1)$

Compound Name: catena-(tris(μ₂-Oxalato)-chromium(iii)-sodium hexa-aqua-magnesium tetrahydrate)

Space Group: P-3c1 **Cell:** a 16.969(3) b 16.969(3) c 12.521(3)
Space Group No.: 165 **Cell:** (Å, °) α 90.00 β 90.00 γ 120.00

R-Factor (%): 8.40 **Temperature(K):** 295 **Density(g/cm³):** 1.734



ZZZVWM

Reference: Frossard (1956) *Schweiz.Mineral.Petrogr.Mitt.* **36**,1

Formula: $Mg_1^{2+}, Na_1^{1+}, C_6 Cr_1 O_{12}^{3-}, 8(H_2 O_1)$

Compound Name: Sodium magnesium trioxalatochromate octahydrate

Space Group: P-31c **Cell:** a 9.780(40) b 9.780(40) c 12.470(210)
Space Group No.: 163 **Cell:** (Å, °) α 90.00 β 90.00 γ 120.00

R-Factor (%): 0.00 **Temperature(K):** 295 **Density(g/cm³):** 1.632

